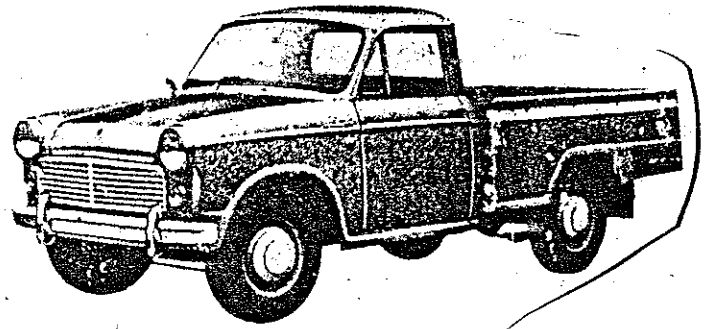


DATSUN PICK-UP



MODEL 320-U

FEBRUARY 1987

Happy new year to everyone!

Well, here it is. The second attempt at some sort of newsletter for Datsun L320 pickup owners. It has taken me 5 months from the last newsletter of September 1986 to now to accumulate enough material to put in here. I have also been busy at work, but I managed to get this together. Thanks to Gene Freeman of San Diego for sending me a letter telling about himself and his 320 truck which he sold about a year ago. Also thanks to Ray Robinson of Spring Valley for giving me a call. I hope Ray is feeling better these days after he had an accident at home. I have noticed that Ray had his truck painted a light tan color to match his newer Ford car. It still looks good.

I hope that the idea of mine to put out a flyer like this is a good and useful idea. If you are not interested in getting one again, please call or write me and I will not send you anymore. (if there are anymore) If you have any suggestions, tips, or parts information to share, please send it to me.

LOST TRUCKS . . .

The following trucks I have seen pass through various wrecking yards on there way to scrap. It is a bit sad to see sometimes when the body is in good shape and only the engine is bad and nobody wanted to fix it up so they just trash it. Someday, there won't be very many left to scrap out.

Mini Truck Dismantling: 4-L320-02575; 4-NL320-601229.
Ecology, Chula Vista: L-320-3-00334B; L-320-3-01105B; L-320-3-02207;
L-320-3-01770. Colton: 5-L320-011519D.
Pic-a-part, Ontario: L-320-2-01745B; 4-L320-00292C; 4-L320-01123C.
Bessler Motors, Presioca St. in Spring Valley: 4-L320-00736.
Corner of Grand and Apple St. in Spring Valley: 5-L320-011217D.

SERIAL NUMBERS

Individual truck serial numbers are found on the data plate on the top center of the firewall, and stamped into the frame near the drivers side front tire. Early year trucks (61,62,63) have serial numbers which give the truck model first, then the year digit, then the consecutive production number. Example; L-320-3-01505B is my '63. Later year trucks (64,65) have the year digit first, then the model number, then the production number. Incidentally, my understanding of the letter "L" before the 320 model signifies left hand drive for export from Japan. Notice how the instrument cluster and glove box door areas of the dash board are the same shape just reversed?

PARTS

Here are some more parts that I have purchased lately:

BRAKE WHEEL CYLINDERS: About 15 months ago I was able to buy complete new brake wheel cylinders from Jarco Auto parts, but I don't know the part numbers, just the price \$12 each.

TAIL LIGHT LENSES AND TRIM RING: New lenses and the bright ring they attach onto are still available from Nissan. These parts make the back of the truck look a lot better. Save your old rubber lense gasket since there are no more new ones available. Lense 26521-08700, \$5.28; lense 26536-08700, \$3.71; rim 26552-08700, only \$3.21.

WINDOW WEATHERSTRIP: The rubber weather stripping for the lower outer edge of the door windows is still around. This is the piece that your arm rests on when the window is down and you stick your elbow out. It is a safe bet that everyone needs these items replaced to keep the rain out of the door interior. Part number 80341-04101 is superceded by number 80341-09400, \$1.61 each side.

HEADLIGHTS: I replaced my standard headlights with the newer Halogen type lamps and it does make a noticeable difference in visibility since halogen lamps put out a whiter light beam. Also check the lamp aim while you have the tim rings off.

SUN VISORS AND PACKAGE TRAYS: Early year trucks (61,62,63) used a sun visor that was made out of a purple plastic material and was mounted in a fixed position in front of the driver. It would only swing up and down. These were very fragile and I have only seen one good one which I put in my truck a while back but now it is broken too. The later year trucks (64,65) use a more conventional sun visor of vinyl with a metal corner pivot that can be swung to the side also. These will fit into the earlier year trucks if you drill 3 screw holes using the base a template. I recently found a pair of good condition sun visors and installed them in my '63. They look and work very good. Package trays were installed in the later year trucks under the passengers side dash board with a few brackets and sheet metal screws. They can be installed into early trucks if you make your own brackets.

DO YOU HAVE ANYTHING TO SHARE???

WHEN ALL ELSE FAILS . . .

It is possible to hand crank the engine if you have a starter problem and can't roll start it. I made a hand crank from steel materials as shown below. When the engine is cold, it takes a few cranks while a hot engine will start with one easy turn.

The front bumper has a cut out in the center that leads right to the front of the crankshaft pulley which has two "fingers" on it to engage the crank.

